



WAVE

2022

R
E
F
E
R
E
N
C
E

2022



General information

05-08

1 / Push-fit Unit

KU-08	11
KU-15 KU-15 P	11
KU-22 KU-22 P	11
KU-30 KU-30 P	11
KO-12	13
KO-15	13
KO-22	13
KO-25	13
KO-30	14
KO-45	14
KO-60	14
KP-12	16
KP-15	16
KP-22	16
KP-25	16
KP-30	17
KP-45	17
KP-60	17
KU-15 IK	19
KU-22 IK	19
KU-30 IK	19
KU-15 I	21
KU-22 I	21
KU-30 I	21

KO-S 15	23
KO-S 22	23
KO-S 30	23

2 / Threaded pin Unit

KU-19 T KU-19 TP	26
KU-25 T KU-25 TP	26
KO-08 T	28
KO-15 T	28
KO-22 T	28
KO-25 T	28
KO-30 T	29
KO-45 T	29
KP-12 T	31
KP-15 T	31
KP-22 T	31
KP-25 T	31
KP-30 T	32
K-12 T	34
K-16 T	34
K-25 T	34
KL-2 T	36
KL-3 T	36
KL-4 T	36
KL-5 T	36
KL-6 T	37
KL-8 T	37

3 / S c r e w - o n U n i t

KU-16 B KU-16 BP	40
KU-22 B KU-22 BP	40
KU-25 B KU-25 BP	40
KU-30 B	40
KU-15 A KU-15 AP	42
KU-19 A	42
KU-25 A KU-25 AP	42
KU-30 A KU-30 AP	42
KU-38 A	43
KO-19 A	45
KO-25 A	45
KO-38 A	45
KS-35 GP	47
KS-50 GP	47

4 / B e a r i n g s f o r l i g h t w e i g h t c o n v e y o r r o l l e r s

KTR 20-60 KS	50
KTR 50-60	52

How do you calculate the load on ball elements?

Each implemented project requires the selection of appropriate ball elements that will meet the load capacity requirements. Therefore, we have created the instruction below that will allow you to choose exactly what you need. The information contained here is a guarantee of selection of balls with the appropriate load capacity, and thus - smooth operation without failure.

Calculation of the load capacity for ball elements with horizontal movement of cargo.

The load factor in the ball elements is 1.3, which means that at least 3 ball elements should be in contact with the load at any time. Therefore, we divide the weight of the load by 3 = the weight on one ball element. However, it is advisable to have more balls on a completely flat surface. Thanks to this, it is possible to achieve better parameters of cargo movement.

NOTE: When using ball elements in the downward position or at a different angle, a greater safety factor must be adopted and balls with a higher load capacity should be selected.

Arrangement of balls on the balltable.

Correct gaps on the ball table ensure that at least 3 ball elements are under a part of the load simultaneously. We calculate the gaps as follows:

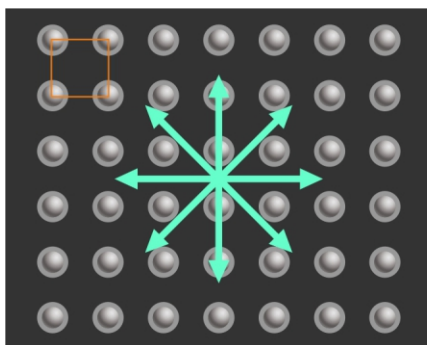
- divide the shortest side of the load by 3.5 = distance between the centers of the balls, e.g. 350 mm ÷ 3.5 = distance 100 mm.

Depending on the direction of the carried load, you can use the following spacing:

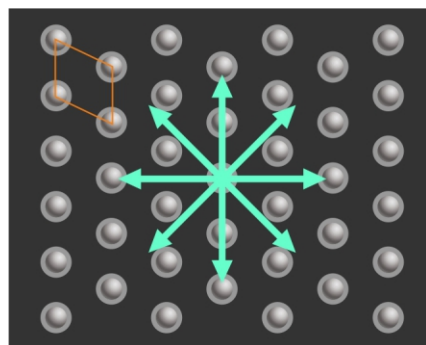
1 / square

2 / rhombus

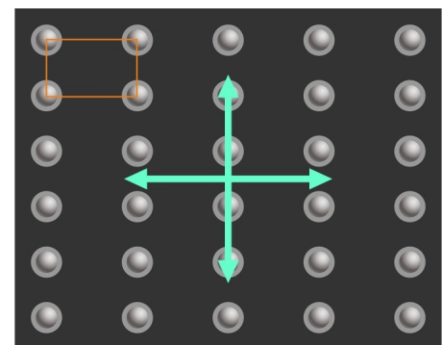
3 / extended gap



1



2



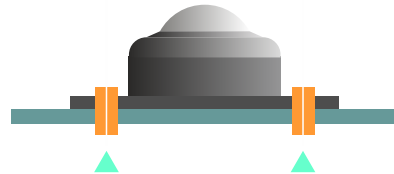
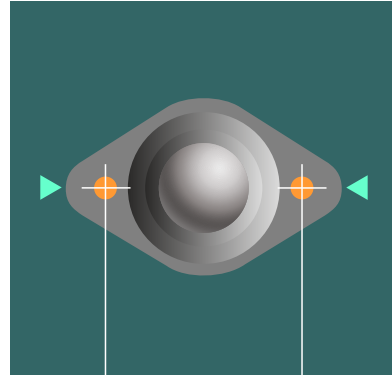
3

ways of mounting / screw-on unit

1/ Type KU-A

2/ Load 10 - 90kg

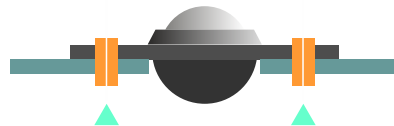
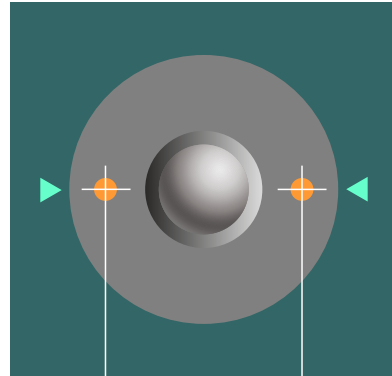
3/ Pages 42 - 43



1/ Type KU-B

2/ Load 15 - 75kg

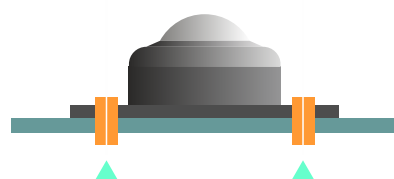
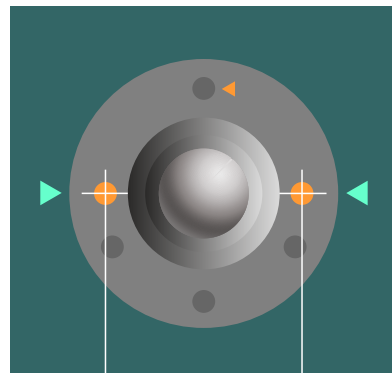
3/ Page 40



1/ Type KO-A

2/ Load 100 - 250kg

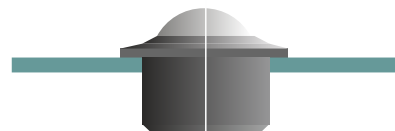
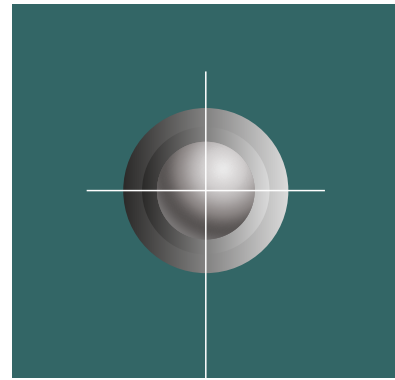
3/ Page 45



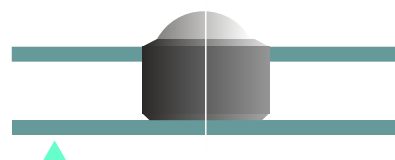
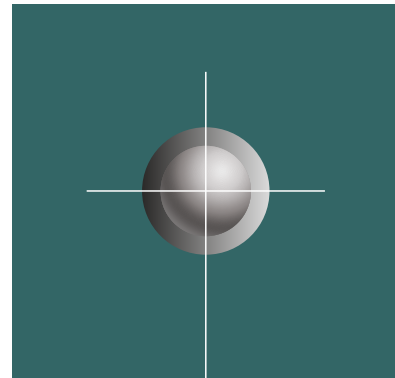
● mounting with two screws or four.

ways of mounting / push-fit unit

- 1/ Type KU, KU-IK, KU-I, KO, KO-S
- 2/ Load 5 - 70kg, 15 - 70kg, 30 - 1400kg
- 3/ Pages 11 - 14, 19 - 23

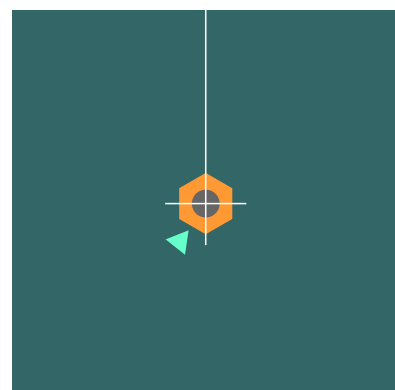
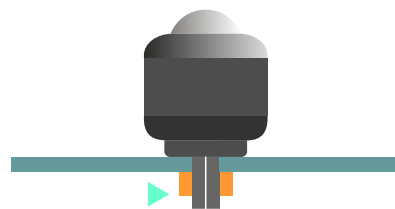


- 1/ Type KP
- 2/ Load 30 - 1400kg
- 3/ Pages 16 - 17



ways of mounting / screw-on unit

- 1/ Type KU-T
- 2/ Load 25 - 35kg
- 3/ Page 26

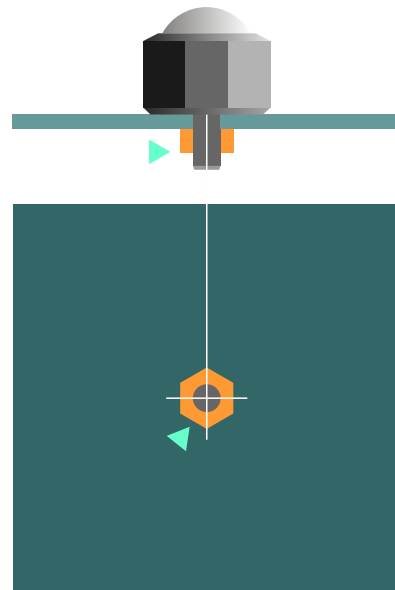


ways of mounting / threaded-pin unit

1/ Type K-T

2/ Load 5 - 60kg

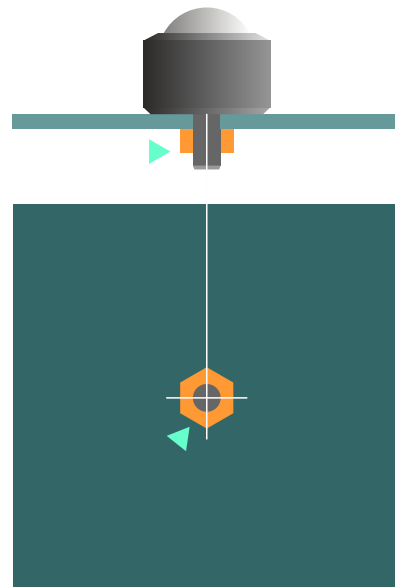
3/ Page 34



1/ Type KP-T, KL-T

2/ Load 30 - 300kg, 5 - 100kg

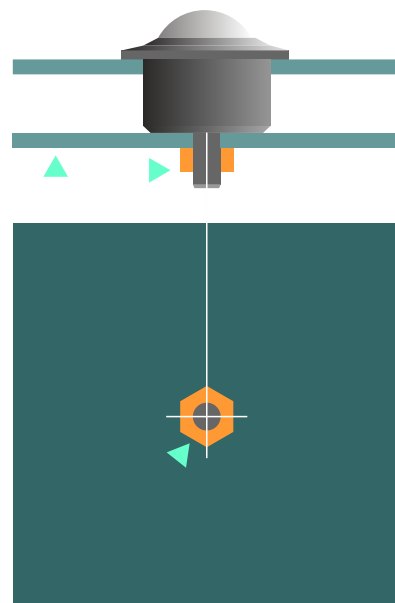
3/ Pages 31 - 32



1/ Type KO-T

2/ Load 10 - 500kg

3/ Page 26



Push-fit Unit



KU

KU push-fit balls

KU transport balls are designed to carry smaller loads, not faster than 1 m/s. These loads range from 5kg to 70kg. The casing of this kind of elements is made of steel sheet, which is galvanized to extend its durability and protect it against the effects of atmospheric conditions. Inside the elements prepared in this way, high-quality steel balls are placed, and the whole allows smooth movement of the components on the surface of the ball table.

Balls should be mounted on ball tables in cut out holes.

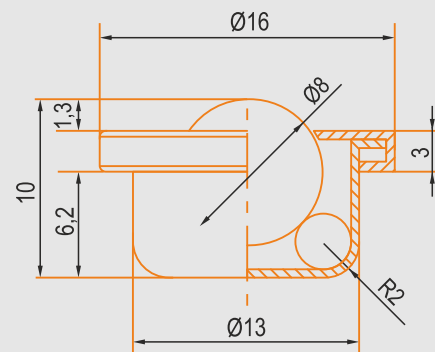
Working temperature: -30°C / +70°C

1 / Push-fit unit

KU-08



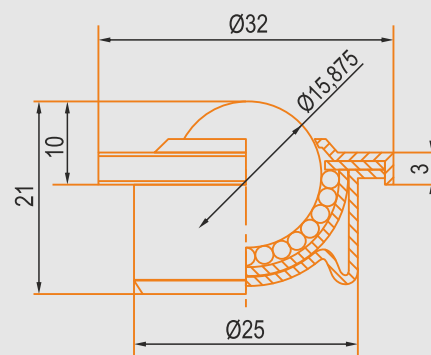
Type	REF. No.	Dynamic load	Static load	Weight 1pcs
KU-08	2011	5kg	8kg	0,005kg



KU-15 KU-15 P



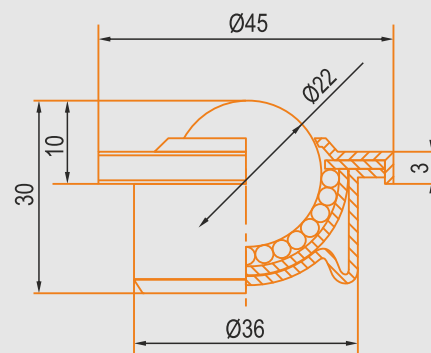
Type	REF. No.	Dynamic load	Static load	Weight 1pcs
KU-15	2012	15kg	25kg	0,044kg
KU-15 P	2076	10kg	15kg	0,032kg



KU-22 KU-22 P



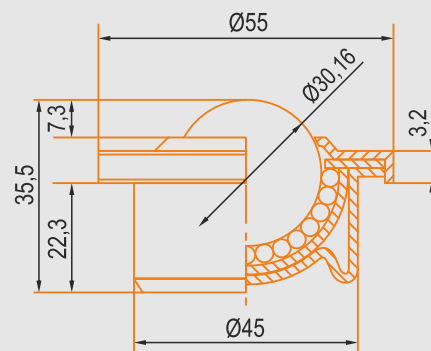
Type	REF. No.	Dynamic load	Static load	Weight 1pcs
KU-22	2013	40kg	55kg	0,120kg
KU-22 P	2077	25kg	35kg	0,077kg



KU-30 KU-30 P



Type	REF. No.	Dynamic load	Static load	Weight 1pcs
KU-30	2014	70kg	85kg	0,250kg
KU-30 P	2078	35kg	45kg	0,134kg



KO

KO push-fit balls

High-quality KO transport balls allow you to transfer loads from 30kg to 1400kg, no faster than 1 m/s. The steel balls are chromed, which increases their resistance to weather conditions. They are placed in specially prepared chrome casings, lathed from a full steel rod. This element allows smooth movement of objects on the surface of the ball table.

Balls should be mounted on ball tables in cut out holes.

Working temperature: -30°C / +70°C

P u s h - f i t U n i t

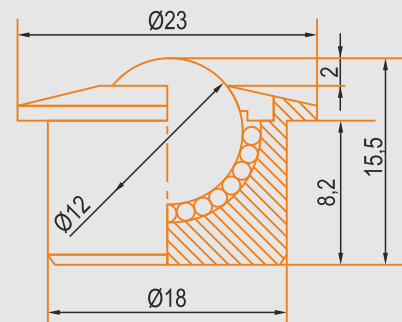
1

1 / Push-fit unit

KO-12



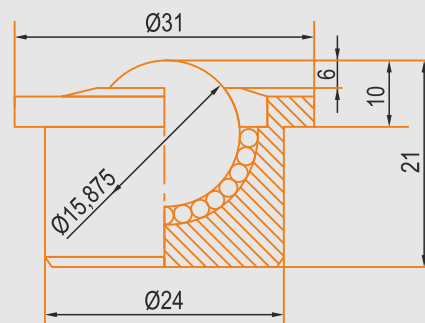
Type	REF. No.	Dynamic load	Static load	Weight 1pcs
KO-12	2024	30kg	40kg	0,035kg



KO-15



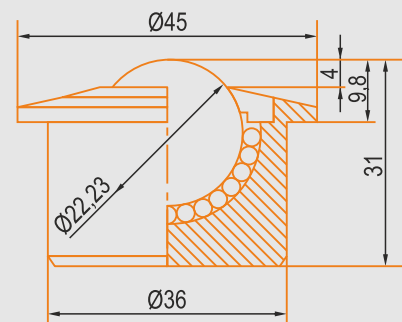
Type	REF. No.	Dynamic load	Static load	Weight 1pcs
KO-15	2025	60kg	75kg	0,060kg



KO-22



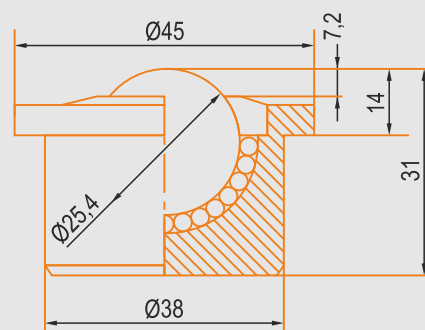
Type	REF. No.	Dynamic load	Static load	Weight 1pcs
KO-22	2026	180kg	200kg	0,190kg



KO-25

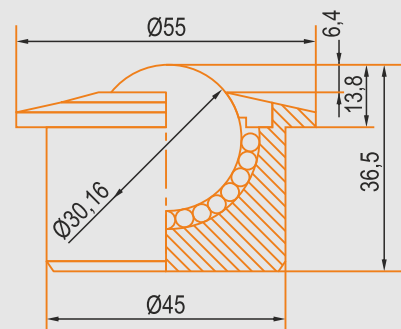


Type	REF. No.	Dynamic load	Static load	Weight 1pcs
KO-25	2027	200kg	220kg	0,250kg



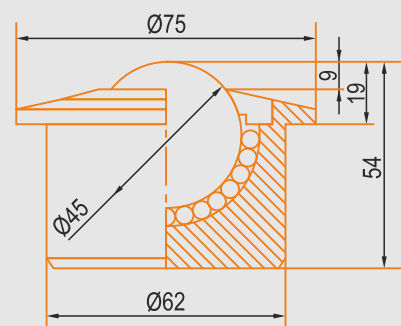
1 / Push-fit unit

KO-30



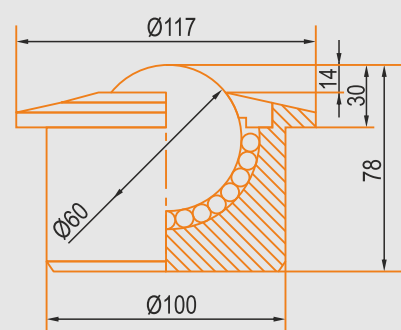
Type	REF. No.	Dynamic load	Static load	Weight 1pcs
KO-30	2028	300kg	350kg	0,380kg

KO-45



Type	REF. No.	Dynamic load	Static load	Weight 1pcs
KO-45	2030	500kg	600kg	1,100kg

KO-60



Type	REF. No.	Dynamic load	Static load	Weight 1pcs
KO-60	2031	1400kg	1600kg	3,800kg

KP

KP push-fit balls

KP transport balls are high-quality elements that allow you to transfer loads of different sizes, weighing from 30kg to 1400kg, not faster than 1 m/s. Their casing is lathed from a full steel rod, and each element is properly secured. To protect against the effects of weather conditions, they are being chromed. This significantly affects the durability of the casing. Inside the prepared components high-quality steel balls are placed, also chrome-plated. In this way, it is possible to move objects smoothly over the surface of the ball table.

The balls can be mounted on the ball tables in any way.

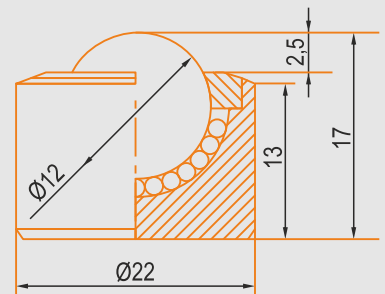
Working temperature: -30°C / +70°C

P u s h - f i t U n i t

1

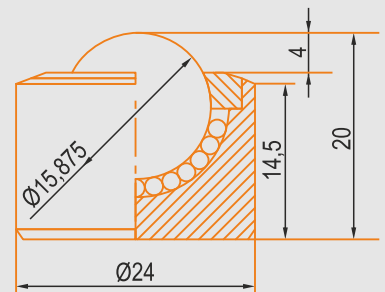
1 / Push-fit unit

KP-12



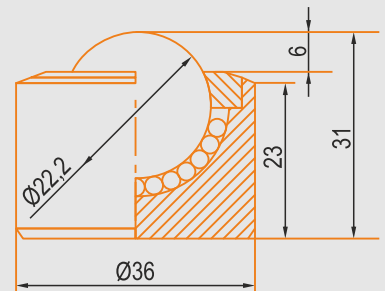
Type	REF. No.	Dynamic load	Static load	Weight 1pcs
KP-12	2034	30kg	40kg	0,035kg

KP-15



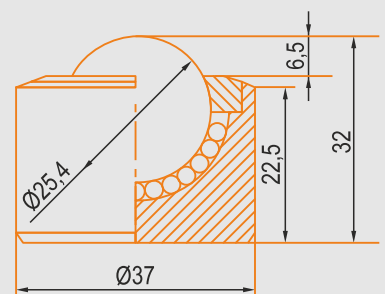
Type	REF. No.	Dynamic load	Static load	Weight 1pcs
KP-15	2035	60kg	75kg	0,050kg

KP-22



Type	REF. No.	Dynamic load	Static load	Weight 1pcs
KP-22	2036	180kg	200kg	0,185kg

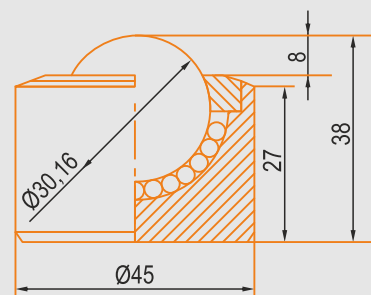
KP-25



Type	REF. No.	Dynamic load	Static load	Weight 1pcs
KP-25	2037	200kg	220kg	0,190kg

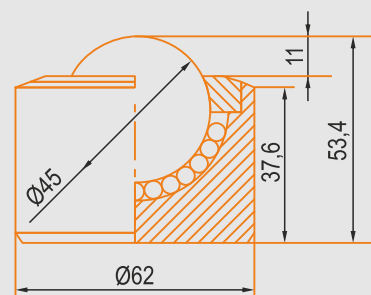
1 / Push-fit unit

KP-30



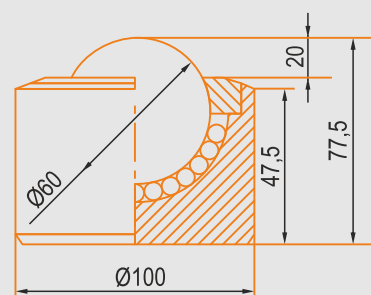
Type	REF. No.	Dynamic load	Static load	Weight 1pcs
KP-30	2038	300kg	350kg	0,340kg

KP-40



Type	REF. No.	Dynamic load	Static load	Weight 1pcs
KP-40	2040	500kg	620kg	0,900kg

KP-60



Type	REF. No.	Dynamic load	Static load	Weight 1pcs
KP-60	2041	1400kg	1600kg	2,100kg



KU-IK push-fit balls

Standard KU-IK transport balls allow you to move elements weighing from 5kg to 70kg, not faster than 1 m/s. High-quality balls are made of AISI 304 stainless steel, thanks to which they have an increased resistance to moisture. They are suitable for use in harsh environments where water and cleaning agents are in contact with main ball. The balls are placed inside a pressed steel sheet casing. Galvanizing of such elements increases their protection against atmospheric conditions

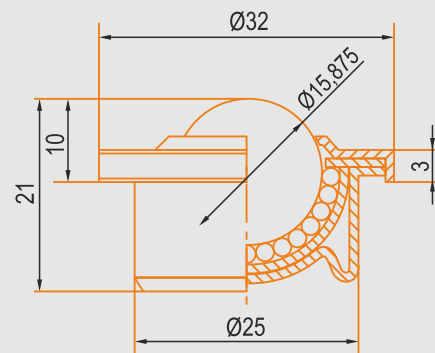
The ball should be mounted on ball tables in cut out holes.

Working temperature: -30°C / +70°C

1 / Push-fit unit

KU-15 IK

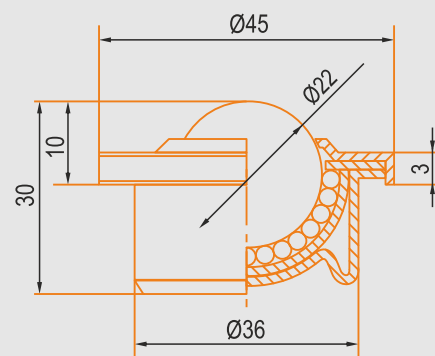
INOX



Type	REF. No.	Dynamic load	Static load	Weight 1pcs
KU-15 IK	2016	15kg	25kg	0,044kg

KU-22 IK

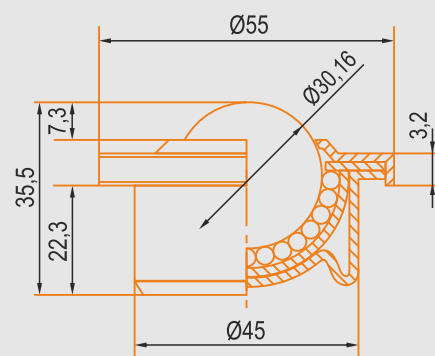
INOX



Type	REF. No.	Dynamic load	Static load	Weight 1pcs
KU-22 IK	2017	40kg	55kg	0,120kg

KU-30 IK

INOX



Type	REF. No.	Dynamic load	Static load	Weight 1pcs
KU-30 IK	2018	70kg	85kg	0,250kg



KU-I push-fit balls

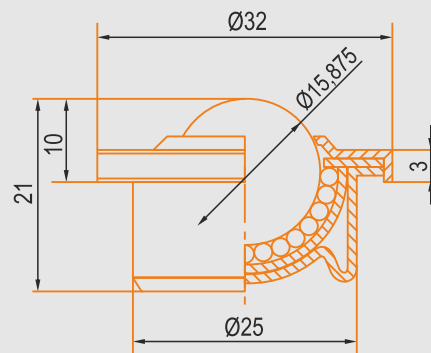
KU-I transport balls are entirely made of stainless steel. These high-quality components can carry loads ranging from 5kg to 70kg, not faster than 1 m/s. The casing of these balls units is pressed from AISI 304 stainless steel, which works well in an aggressive environment. The high durability of the product enables work in contact with water, cleaning agents and food industry. Inside such a resistant casing a high-quality stainless steel ball is placed.

The ball should be mounted on ball tables in cut out holes.

Working temperature: -30°C / +70°C

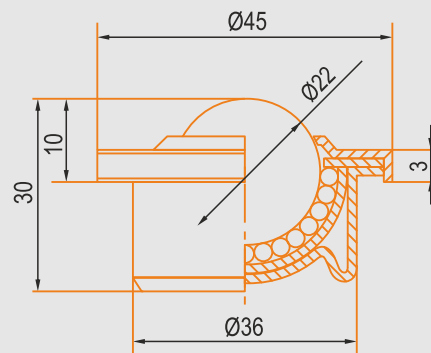
1 / Push-fit unit

KU-15 I



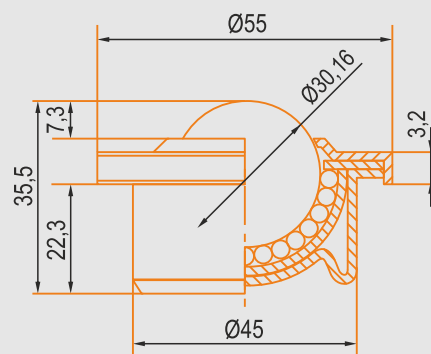
Type	REF. No.	Dynamic load	Static load	Weight 1pcs
KU-15 I	2019	15kg	25kg	0,044kg

KU-22 I



Type	REF. No.	Dynamic load	Static load	Weight 1pcs
KU-22 I	2020	40kg	55kg	0,120kg

KU-30 I



Type	REF. No.	Dynamic load	Static load	Weight 1pcs
KU-30 I	2021	70kg	85kg	0,250kg

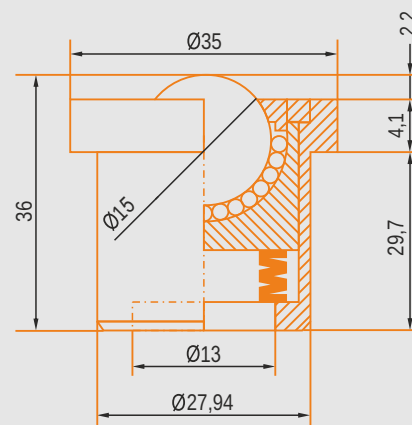
KO-S

Ball units with a spring KO-S

The balls transfer loads up to 60kg to 150kg not faster than 1 m/s. The spring starts working with the load indicated in the tables. The ball housing is CNC machined from a full steel bar and then protected against environment conditions by chrome plating significantly extends its durability. A spring is installed in the center of the housing, which absorbs impacts during operation. Inside, there are chrome-plated steel balls, which facilitate smooth movement of components on the top of the ball table. All this makes the balls work for a long time, failure-free and maintenance-free. The high attention to detail in production has resulted in the extremely smooth running of the ball element.

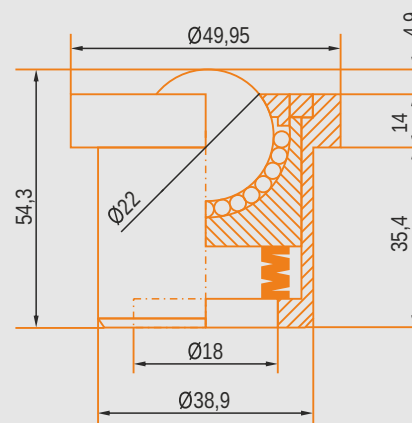
1 / Push-fit unit

KO-15 S



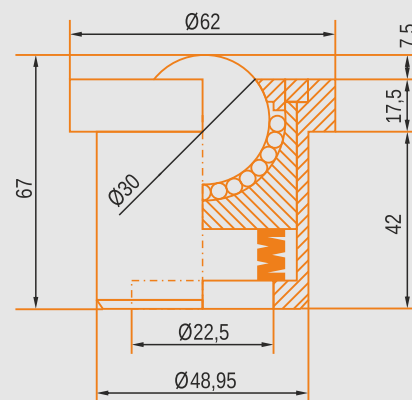
Type	REF. No.	Dynamic load	Static load	Weight 1pcs
KO-15 S	2066	60kg	70kg	0,130kg

KO-22 S

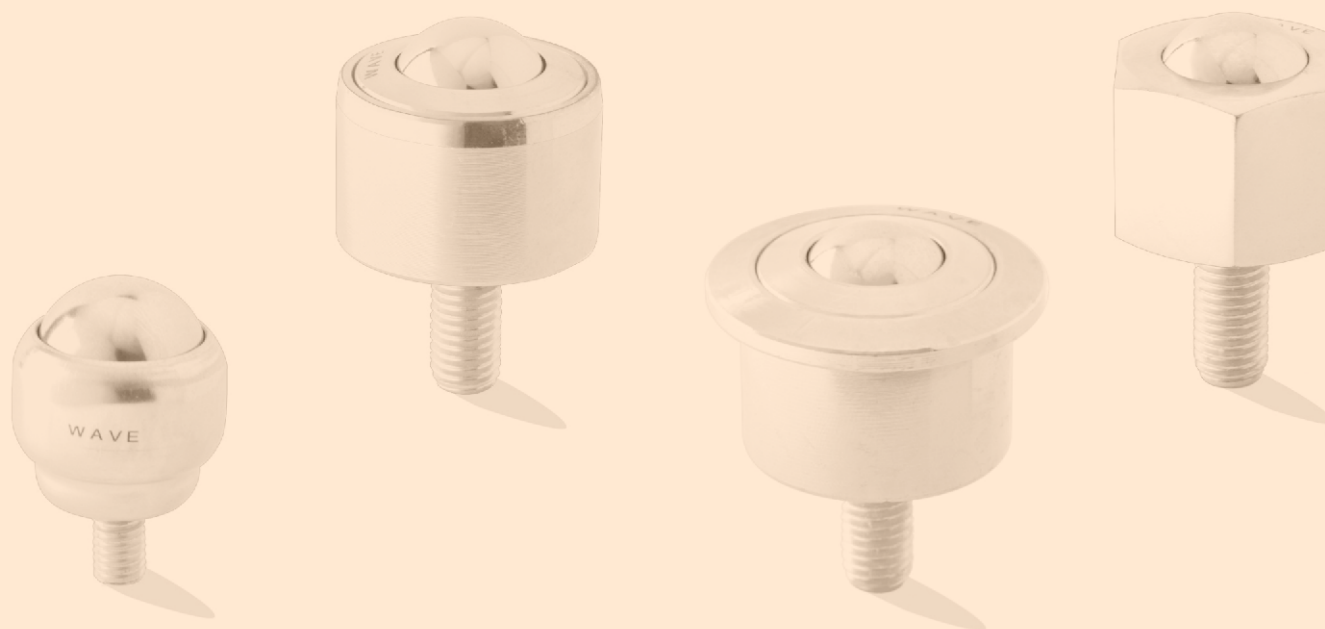


Type	REF. No.	Dynamic load	Static load	Weight 1pcs
KO-22 S	2067	80kg	100kg	0,350kg

KO-30 S



Type	REF. No.	Dynamic load	Static load	Weight 1pcs
KO-30 S	2068	150kg	200kg	0,770kg



Th r e a d e d p i n U n i t

2



KU-T balls with threaded pin

KU-T standard transport balls with threaded pin, hand-tightened, are designed for light and simple work. They can carry a load in the range of 25kg to 35kg, not faster than 1 m/s.

The balls are made of steel and then placed and pressed in a steel casing. This one is also pressed from steel sheet, properly protected against weather conditions. Such a result is obtained by galvanizing, which significantly extends the durability of the elements. This economic solution allows the simple movement of various things on the surface of the ball table. The balls are designed for mounting in ball tables, they should be inserted into threaded holes or pass-through holes, secured with a nut from below.

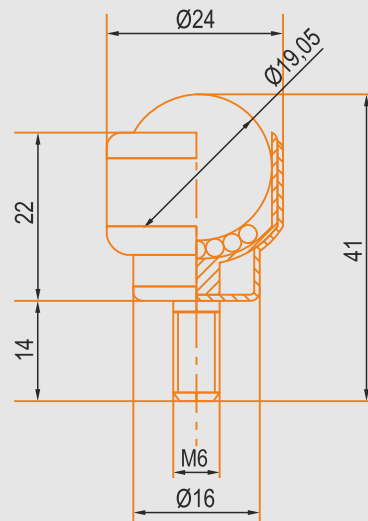
Working temperature: -30°C / +70°C

2 / Threaded pin unit

KU-19 T KU-19 TP



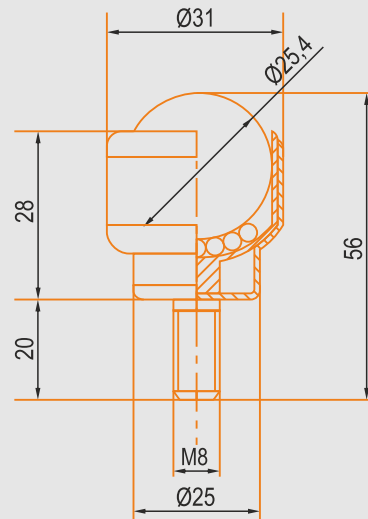
Type	REF. No.	Dynamic load	Static load	Weight 1pcs
KU-19 T	2022	25kg	35kg	0,050kg
KU-19 TP	2070	15kg	25kg	0,026kg

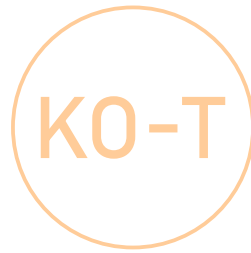


KU-25 T KU-25 TP



Type	REF. No.	Dynamic load	Static load	Weight 1pcs
KU-25 T	2023	35kg	45kg	0,130kg
KU-25 TP	2071	25kg	35kg	0,052kg





KO-T balls with threaded pin

KO-T transport balls with a threaded pin are designed to transfer loads from 10kg to 500kg, not faster than 1 m/s. Their casing is made of a full steel rod, which is properly protected from weather conditions. This is done by chroming the elements, which significantly extends their durability. High-quality balls are placed inside, also chromed, which together allows smooth movement of objects on the surface of the table. The ball can be mounted on ball tables in threaded or pass-through holes, secured with a nut from below.

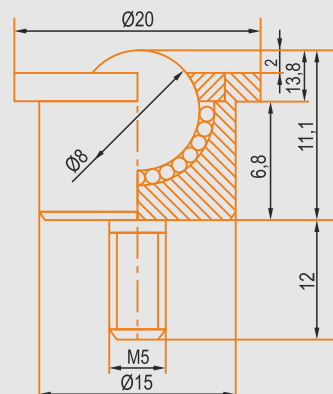
Working temperature: -30°C / +70°

Threaded pin Unit

2

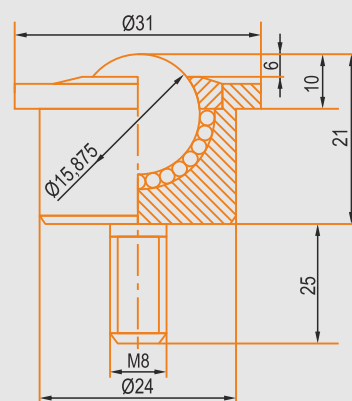
2 / Threaded pin unit

KO-08 T



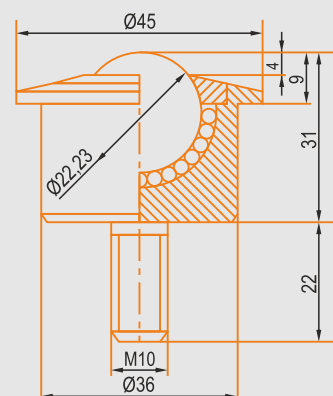
Type	REF. No.	Dynamic load	Static load	Weight 1pcs
KO-08 T	2042	10kg	15kg	0,020kg

KO-15 T



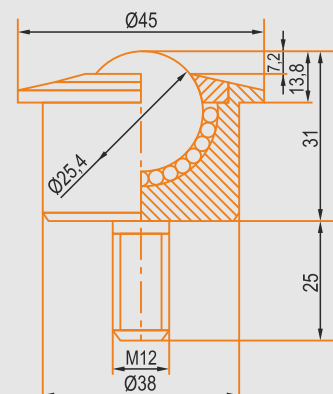
Type	REF. No.	Dynamic load	Static load	Weight 1pcs
KO-15 T	2043	60kg	75kg	0,085kg

KO-22 T



Type	REF. No.	Dynamic load	Static load	Weight 1pcs
KO-22 T	2044	180kg	200kg	0,250kg

KO-25 T



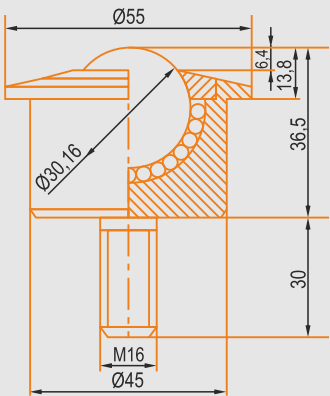
Type	REF. No.	Dynamic load	Static load	Weight 1pcs
KO-25 T	2045	200kg	220kg	0,290kg

2 / Threaded pin unit

KO-30 T



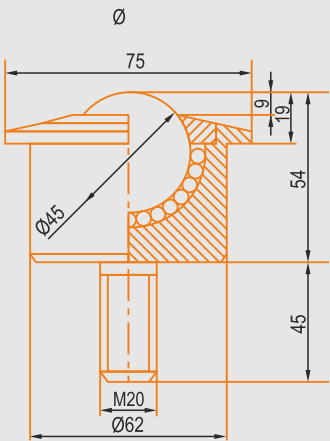
Type	REF. No.	Dynamic load	Static load	Weight 1pcs
KO-30 T	2046	300kg	350kg	0,410kg



KO-45 T



Type	REF. No.	Dynamic load	Static load	Weight 1pcs
KO-45 T	2047	500kg	600kg	1,150kg



**KP-T balls with threaded pin**

Simple KP-T ball elements with threaded pin allow the transfer of loads weighing from 30kg to 300kg, not faster than 1 m/s. The steel ball is mounted in a casing lathed of a full steel rod, which is properly secured to significantly extend its durability. Chrome plating also provides protection against atmospheric agents. This combination allows the components to move smoothly over a ball table or conveyor. The ball can be mounted on ball tables in threaded or pass-through holes, secured with a nut from below.

Working temperature: -30°C / +70°C

Threaded pin Unit

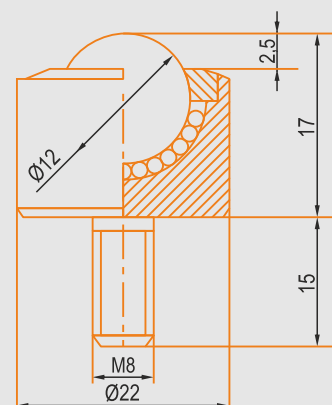
2

2 / Threaded pin unit

KP-12 T



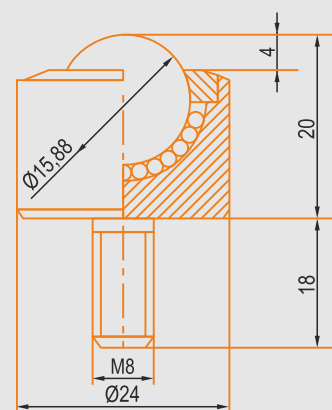
Type	REF. No.	Dynamic load	Static load	Weight 1pcs
KP-12 T	2048	30kg	40kg	0,040kg



KP-15 T



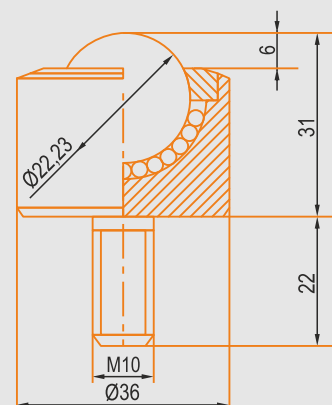
Type	REF. No.	Dynamic load	Static load	Weight 1pcs
KP-15 T	2049	60kg	75kg	0,055kg



KP-22 T



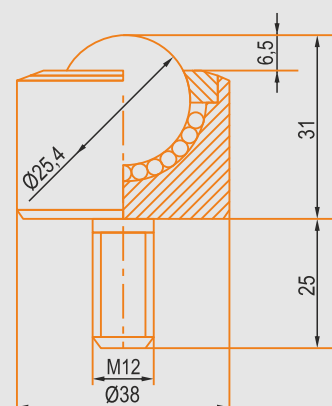
Type	REF. No.	Dynamic load	Static load	Weight 1pcs
KP-22 T	2050	180kg	200kg	0,190kg



KP-25 T



Type	REF. No.	Dynamic load	Static load	Weight 1pcs
KP-25 T	2051	200kg	220kg	0,200kg

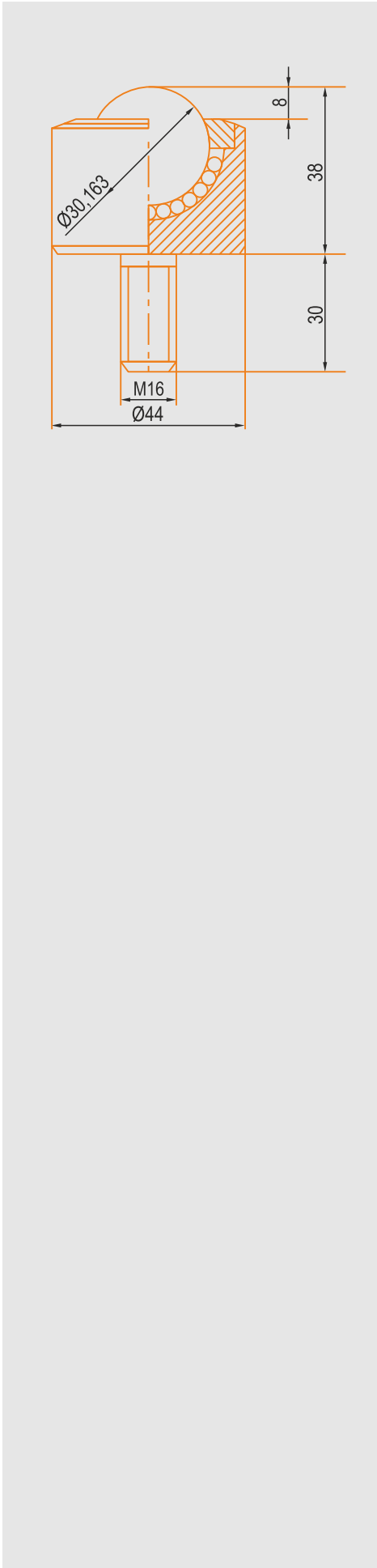


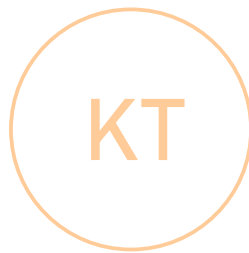
2 / Threaded pin unit

KP-30 T



Type	REF. No.	Dynamic load	Static load	Weight 1pcs
KP-30 T	2052	300kg	350kg	0,340kg





K-T balls with threaded pin

Hexagonal K-T ball elements with threaded pin are designed to carry light loads, not faster than 1 m/s. The weight range is from 5kg to 60kg. The ball casing is lathed and milled into a hexagon from a solid steel rod, which is then subjected to chrome plating. Such protection not only extends the durability of the elements, but also protects them from the effects of weather conditions. Inside, chromed balls are placed, which allows smooth movement of components along the surface of the ball table.

The ball can be mounted on ball tables in threaded or pass-through holes, secured with a nut from below.

Working temperature: -30°C / +70°C

Threaded pin Unit

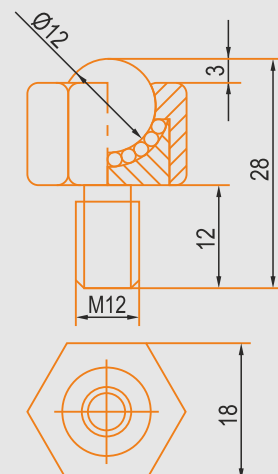
2

2 / Threaded pin unit

K-12 T



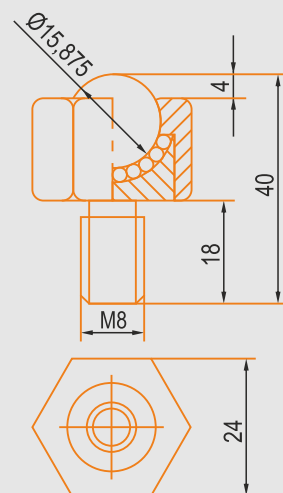
Type	REF. No.	Dynamic load	Static load	Weight 1pcs
K-12 T	2063	5kg	10kg	0,025kg



K-16 T



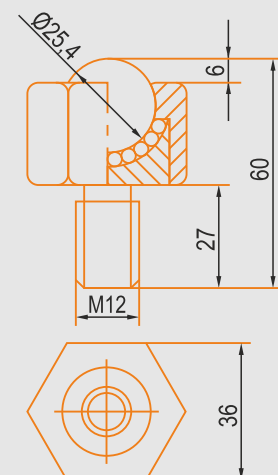
Type	REF. No.	Dynamic load	Static load	Weight 1pcs
K-16 T	2064	10kg	15kg	0,150kg



K-25 T



Type	REF. No.	Dynamic load	Static load	Weight 1pcs
K-25 T	2065	60kg	80kg	0,210kg





KL-T balls with threaded pin

KL-T precision mini ball elements can transfer loads from 5kg to 100kg, not faster than 1 m/s.

They are used in measuring instruments, light coil holders, guides adapted to low line traffic, as well as in miniature mechanisms. Chromed steel balls are placed in a casing lathed from a solid steel rod, which is subjected to chromium plating in order to protect it from weather effects. This process significantly extends the durability of individual elements.

The ball can be mounted on ball tables in threaded or pass-through holes, secured with a nut from below.

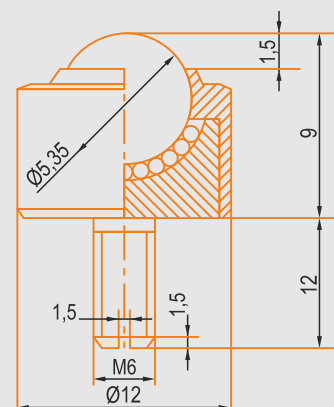
Working temperature: -30°C / +70°C

2 / Threaded pin unit

KL-2 T



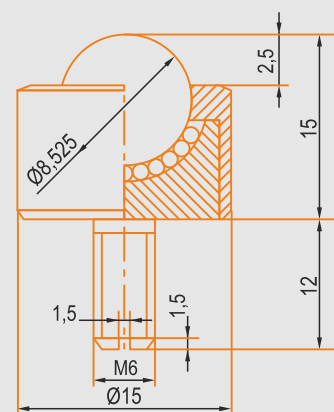
Type	REF. No.	Dynamic load	Static load	Weight 1pcs
KL-2 T	2057	5kg	6kg	0,035kg



KL-3 T



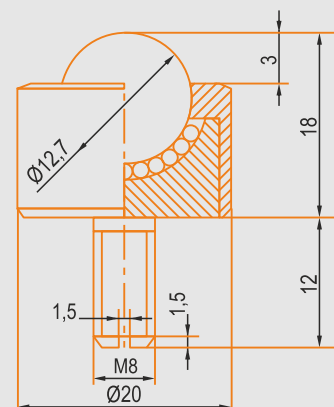
Type	REF. No.	Dynamic load	Static load	Weight 1pcs
KL-3 T	2058	7kg	8kg	0,042kg



KL-4 T



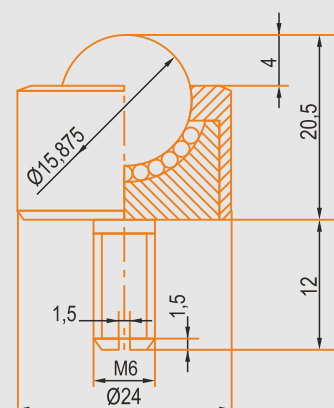
Type	REF. No.	Dynamic load	Static load	Weight 1pcs
KL-4 T	2059	8kg	10kg	0,055kg



KL-5 T

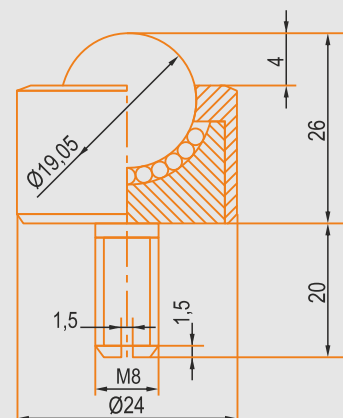


Type	REF. No.	Dynamic load	Static load	Weight 1pcs
KL-5 T	2060	15kg	20kg	0,060kg



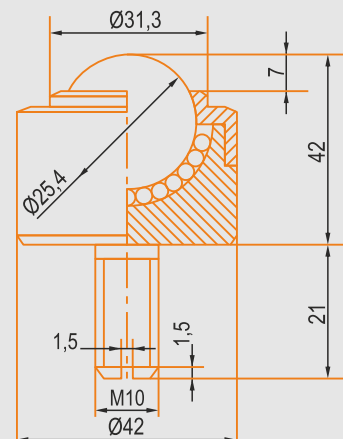
2 / Threaded pin unit

KL-6 T

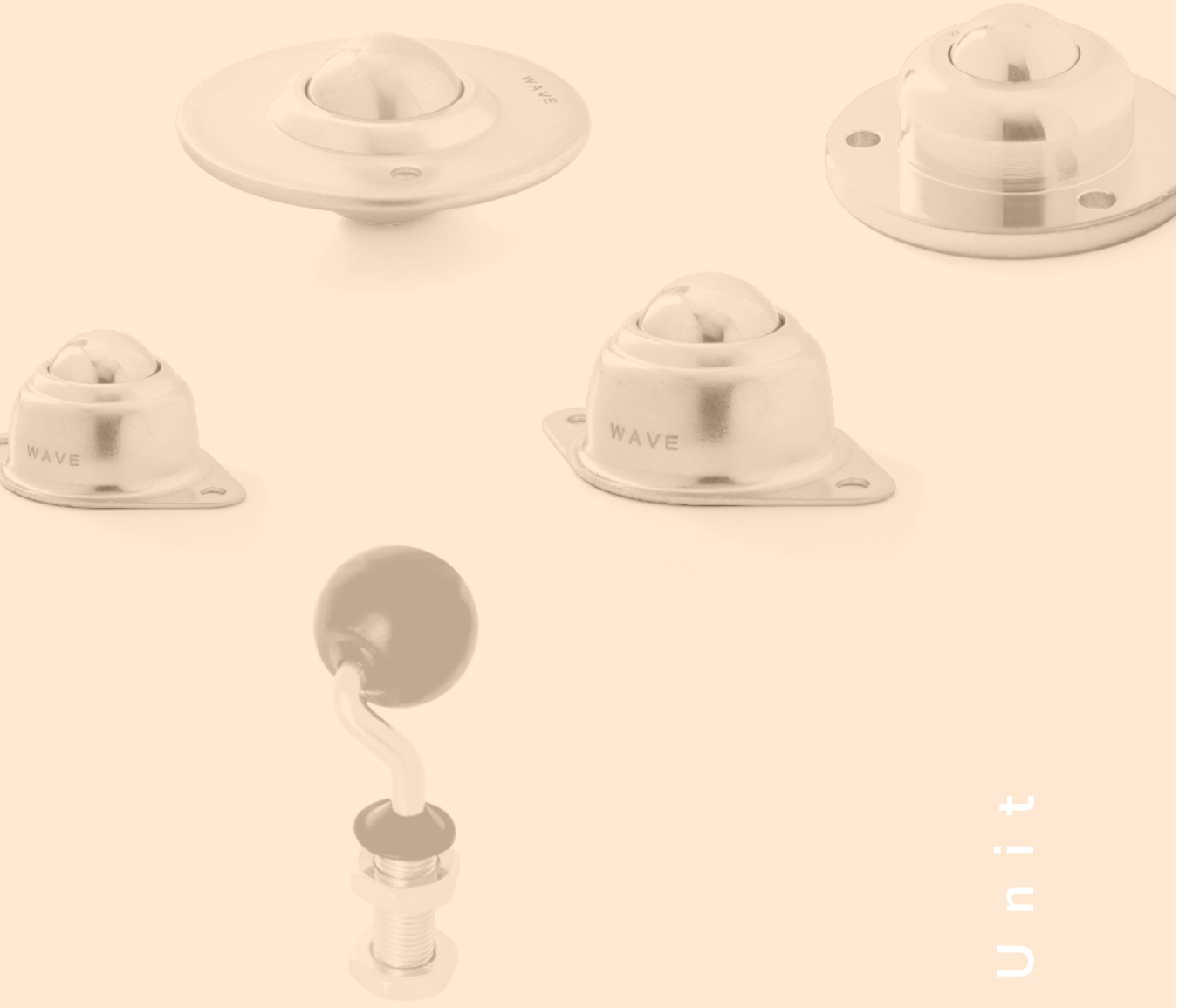


Type	REF. No.	Dynamic load	Static load	Weight 1pcs
KL-6 T	2061	40kg	50kg	0,140kg

KL-8 T



Type	REF. No.	Dynamic load	Static load	Weight 1pcs
KL-8 T	2062	100kg	150kg	0,210kg



S c r e w - o n U n i t





KU-B screw-on balls

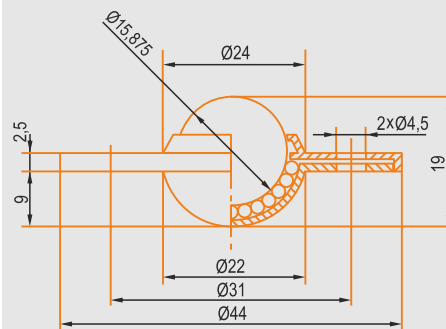
KU-B screw-on ball elements, also called a saturn, can transfer loads in the range from 15kg to 70kg, not faster than 1 m/s. Due to the easy assembly with screws, they are of great interest to designers who find a wide use for them. The casing of these elements is pressed from steel sheet, which is then protected against the effects of weather conditions. The galvanizing extends the durability of the materials considerably. A high quality steel ball is placed and pressed inside, which allows smooth movement of objects on the surface of the ball table or assembly station.

Light versions of the ball elements are mounted in the table with two screws, and heavy versions with three.

Working temperature: -30°C / +70°C

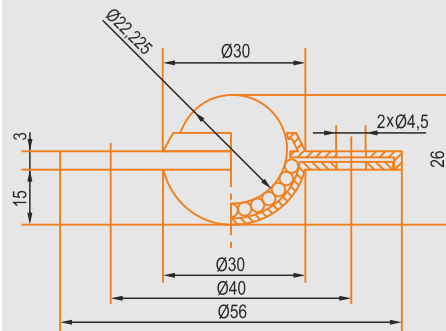
3 / Screw-on unit

KU-16 B KU-16 BP



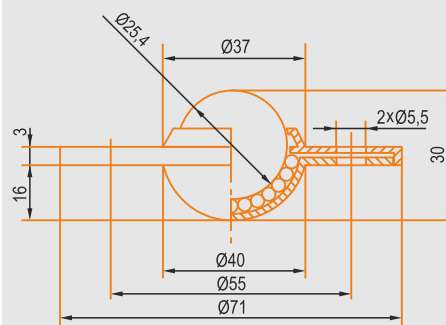
Type	REF. No.	Dynamic load	Static load	Weight 1pcs
KU-16 B	2006	15kg	20kg	0,04kg
KU-16 BP	2072	10kg	15kg	0,032kg

KU-22 B KU-22 BP



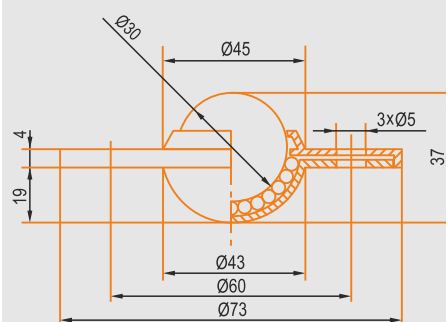
Type	REF. No.	Dynamic load	Static load	Weight 1pcs
KU-22 B	2007	25kg	35kg	0,09kg
KU-22 BP	2073	18kg	25kg	0,056kg

KU-25 B KU-25 BP



Type	REF. No.	Dynamic load	Static load	Weight 1pcs
KU-25 B	2008	35kg	45kg	0,15kg
KU-25 BP	2074	25kg	35kg	0,09kg

KU-30 B



Type	REF. No.	Dynamic load	Static load	Weight 1pcs
KU-30 B	2009	75kg	95kg	0,22kg



KU-A screw-on balls

Standard KU-A light ball elements carry loads from 10kg to 90kg, not faster than 1 m/s.

The casing, which is pressed from steel sheet and then galvanized to protect it against weather conditions, is a long-lasting element. A high-quality steel ball is placed inside, which allows smooth movement of objects on the surface of the ball table. The ball should be mounted on ball tables with screws.

Light versions are mounted with two screws and heavy versions on four.

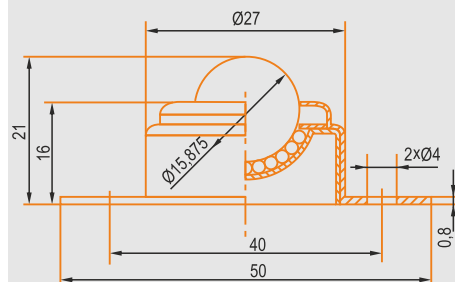
Working temperature: -30°C / +70°C

3 / Screw-on unit

KU-15 A KU-15A P



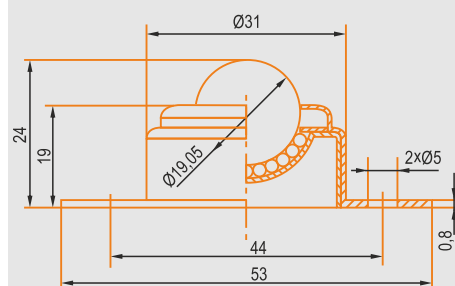
Type	REF. No.	Dynamic load	Static load	Weight 1pcs
KU-15 A	2001	10kg	15kg	0,038kg
KU-15 AP	2071	7kg	12kg	0,052kg



KU-19 A



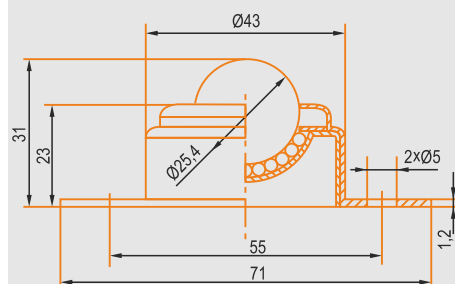
Type	REF. No.	Dynamic load	Static load	Weight 1pcs
KU-19 A	2002	15kg	20kg	0,058kg



KU-25 A KU-25 AP



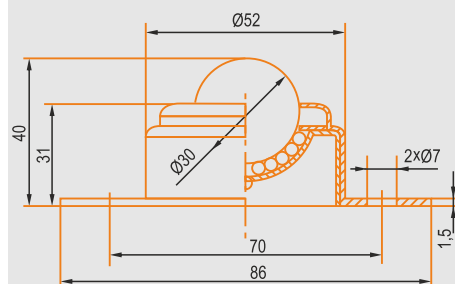
Type	REF. No.	Dynamic load	Static load	Weight 1pcs
KU-25 A	2003	30kg	45kg	0,130kg
KU-25 AP	2068	25kg	35kg	0,070kg



KU-30 A KU-30 AP



Type	REF. No.	Dynamic load	Static load	Weight 1pcs
KU-30 A	2004	65kg	80kg	0,240kg
KU-30 AP	2069	40kg	55kg	0,125kg

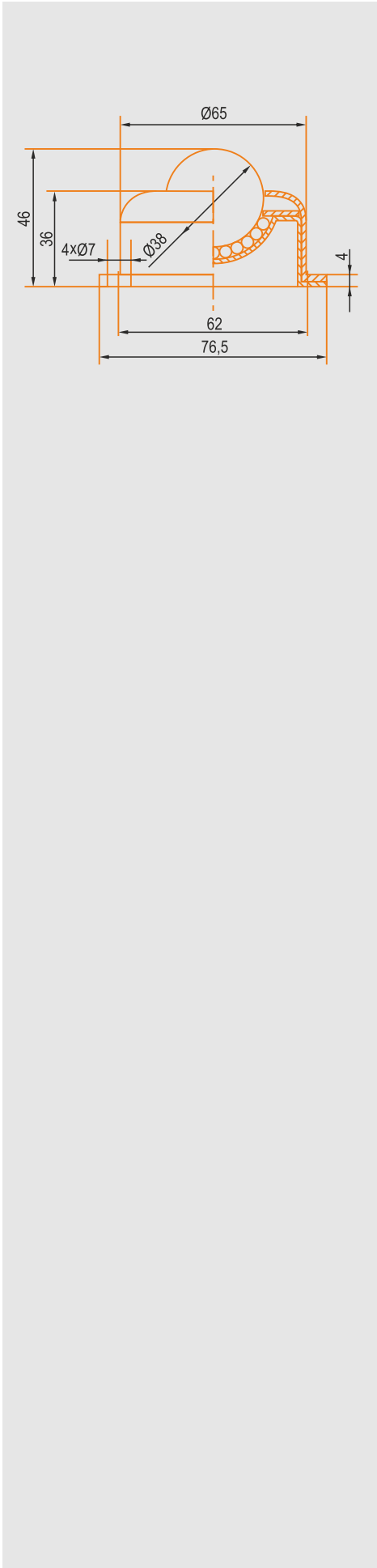


3 / Screw-on unit

KU-38 A



Type	REF. No.	Dynamic load	Static load	Weight 1pcs
KU-38 A	2005	90kg	110kg	0,480kg





KO-A screw-on balls

Multidirectional KO-A balls are products of very high quality that can carry large loads in the range 100kg to 250kg, not faster than 1 m/s. The casing is lathed out of a full steel rod, which is subjected to chromium plating to protect it against the negative influence of atmospheric factors. Thanks to this, the element remains functional for much longer.

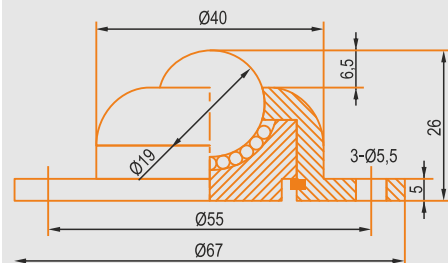
High-quality steel balls, also chrome-plated, are placed inside the casing, and the whole guarantees smooth movement of objects on the surface of the table or floor. The element itself also works very well.

The ball is mounted in ball conveyors. In the KO-19 A and KO-25 A version the elements are mounted at the base with three screws. The KO-38 A version are mounted at the base with four screws

Working temperature: -30°C / +70°C

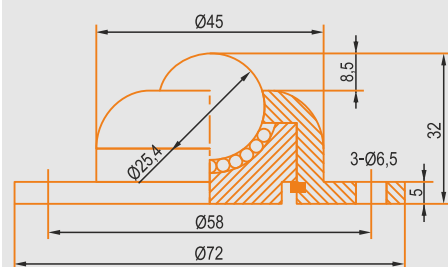
3 / Screw-on unit

KO-19 A



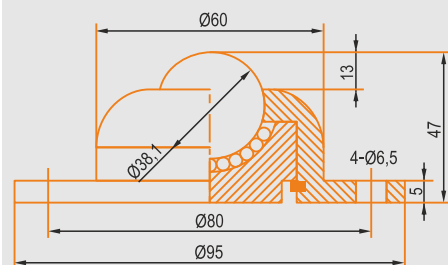
Type	REF. No.	Dynamic load	Static load	Weight 1pcs
KO-19 A	2054	100kg	120kg	0,220kg

KO-25 A



Type	REF. No.	Dynamic load	Static load	Weight 1pcs
KO-25 A	2055	150kg	180kg	0,320kg

KO-38 A



Type	REF. No.	Dynamic load	Static load	Weight 1pcs
KO-38 A	2056	250kg	300kg	0,810kg

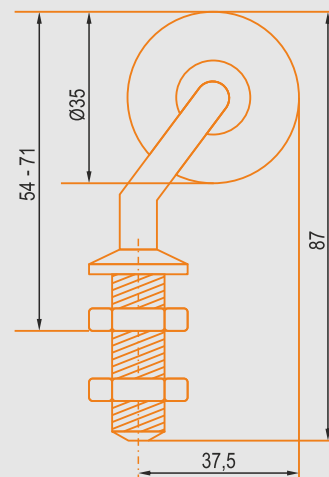


Rubber ball units KS-G

Rubber ball units for transporting glass with a threaded pin are designed to transfer a load of 18kg - 22kg, not faster than 0.5m/s. The ball base is made of a galvanized steel rod. The transport ball can be mounted in threaded sockets or through holes, and secured with nuts on the bottom and top.

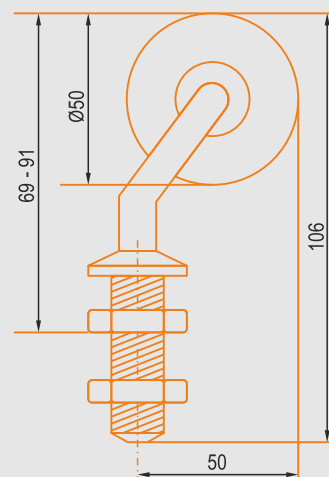
3 / Screw-on unit

KS-35 GP



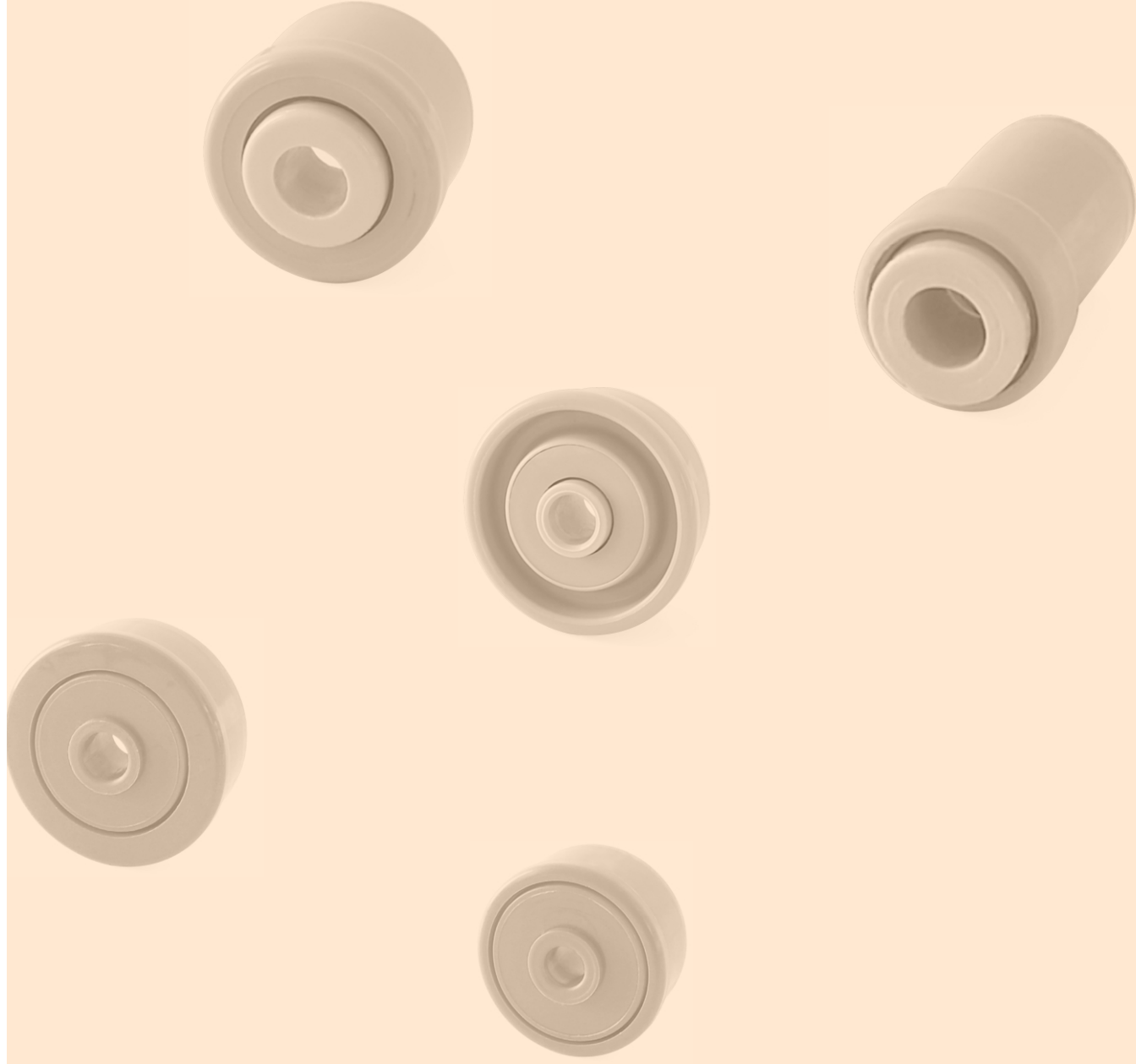
Type	REF. No.	Dynamic load	Static load	Weight 1pcs
KS-35GP	2084	18kg	22kg	0,123kg

KS-50 GP



Type	REF. No.	Dynamic load	Static load	Weight 1pcs
KS-50 GP	2082	22kg	28kg	0,210kg

Bearings 4



**Plastic bearings for conveyor rollers**

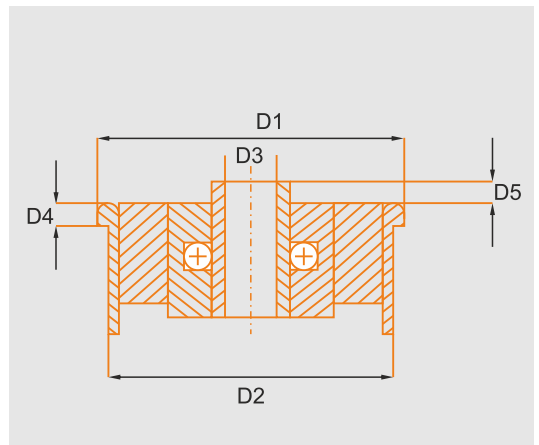
Plastic bearings are used in the production of lightweight conveyor rollers and for their servicing.

The dimensions of the bearing housing are adapted to the PVC pipes available on the market.

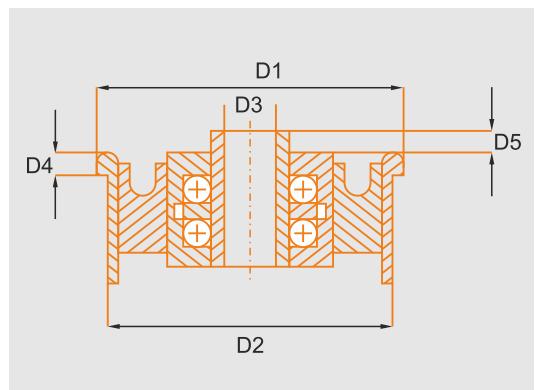
They can also be successfully used with rollers made of steel pipes. Bearings from 20mm to 60mm are available. The load capacity per one bearing, depending on the diameter, ranges from 5kg to 15kg. The advantage of plastic bearings is low costs and easy assembly.

4 / Plastic bearings for conveyor rollers

KTR 50 - 60 KS



Type	REF. No.	D1	D2	D3	D4	D5	Load capacity
KTR 20x1.5-08-KS	3001	20	17,3	8	8	2	5
KTR 30x1.5-08-KS	3002	30	27,3	8	8	2	7
KTR 30x1.5-10-KS	3003	30	27,3	10	8	2	7
KTR 40x1.5-08-KS	3004	40	37,3	8	8	2	7
KTR 40x1.5-10-KS	3005	40	37,3	10	8	2	7
KTR 40x1.5-12-KS	3006	40	37,3	12	8	2	7



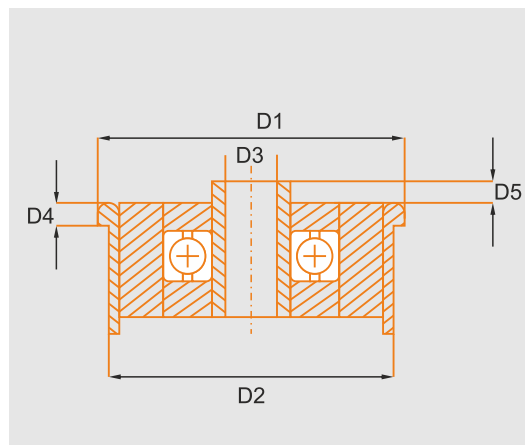
Type	REF. No.	D1	D2	D3	D4	D5	Load capacity
KTR 50x1.5-08-KS	3007	50	47,3	8	3,9	2,5	15
KTR 50x1.5-10-KS	3008	50	47,3	10	3,9	2,5	15
KTR 50x1.5-12-KS	3009	50	47,3	12	3,9	2,5	15
KTR 50x2.8-08-KS	3010	50	44,4	8	3,9	2,5	15
KTR 50x2.8-10-KS	3011	50	44,4	10	3,9	2,5	15
KTR 50x2.8-12-KS	3012	50	44,4	12	3,9	2,5	15
KTR 60x1.5-08-KS	3013	60	57,3	8	3,9	2,5	15
KTR 60x1.5-10-KS	3014	60	57,3	10	3,9	2,5	15
KTR 60x1.5-12-KS	3015	60	57,3	12	3,9	2,5	15
KTR 60x2.0-10-KS	3016	60	56,3	10	3,9	2,5	15
KTR 60x2.0-12-KS	3017	60	56,3	12	3,9	2,5	15

**Precision bearings for conveyor rollers**

Precision bearings in plastic housings are used in the production or servicing of conveyor rollers. The dimensions of the bearing housing are adapted to the PVC and steel pipes available on the market. Bearings from 50mm to 60mm are available. The load capacity for one bearing is 80kg. The advantage of bearings in plastic housings is easy installation, quiet operation and protection against dirt.

4 / Precision bearings for conveyor rollers

KTR 50 - 60



Type	REF. No.	D1	D2	D3	D4	D5	Load capacity
KTR 50x1.5-10 <u>6202</u> ●	3018	50	47,3	10	5	2,5	80
KTR 50x1.5-12 <u>6202</u> ●	3019	50	47,3	12	5	2,5	80
KTR 50x1.5-15 <u>6003</u> ●	3020	50	47,3	15	5	2,5	80
KTR 50x2.8-12 <u>6202</u> ●	3021	50	44,4	12	5	2,5	80
KTR 50x2.8-15 <u>6003</u> ●	3022	50	44,4	15	5	2,5	80
KTR 60x2.0-12 <u>6202</u> ●	3023	60	56,3	12	5	2,5	80
KTR 60x2.0-15 <u>6003</u> ●	3024	60	56,3	15	5	2,5	80

● bearings signature

N O T E



WAVE Co.
05-825 Grodzisk Mazowiecki
ul. Żyrardowska 9



WAVE

wave@wave.info.pl www.wave.info.pl